

PROPOSED SPRINGDALE DATA CENTER: WHAT YOU NEED TO KNOW



151 Porter St, Springdale, PA 15144

Springdale Borough

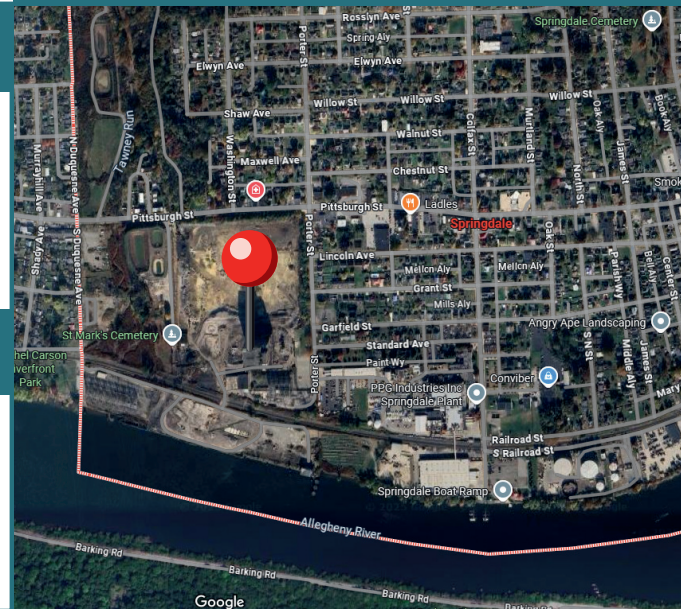
Allegheny County

THE COMPANIES BEHIND IT

The site developer is Allegheny DC Property Company LLC, which is owned by Davidson Kempner Capital Management, one of the largest hedge fund managers in the world. The data center does not have a tenant yet.

PROJECT DETAILS

Located at the former site of the Cheswick Generating Station, this development would include a 565,000 sq ft data center and a 200,000 sq ft cooling facility. Energy demand is estimated to be about 180 megawatts (MW).



WHAT IS A DATA CENTER?

Data centers contain a large group of networked computer servers used for the storage, processing, or distribution of data. The recent rise of generative AI technologies and chatbots has been driving a surge in data center proposals in PA. This site is intended to be a “hyperscale” facility used by a major tech company.

POTENTIAL IMPACTS

- Massive energy demand
- Expanded fracking in the region
- Increased resident electric rates
- High water usage for cooling servers
- Can emit noise, light, and air pollution
- Creates few long-term jobs

GET INVOLVED



Attend the Borough Planning Commission meeting on Wednesday, September 24th at 6pm and the public hearing on October 16th.



You’ll have the opportunity to ask questions and express comments or concerns during the public comment periods at these meetings.



Contact your municipality at sb@springdaleborough.com or 724-274-6800.



Protect PT

www.protectpt.org/data-center



Lauren Posey, Policy Advocate



lauren@protectpt.org



412-307-7099